

# TADANO

## TR-350 M-1

### TOTAL RATED LOADS

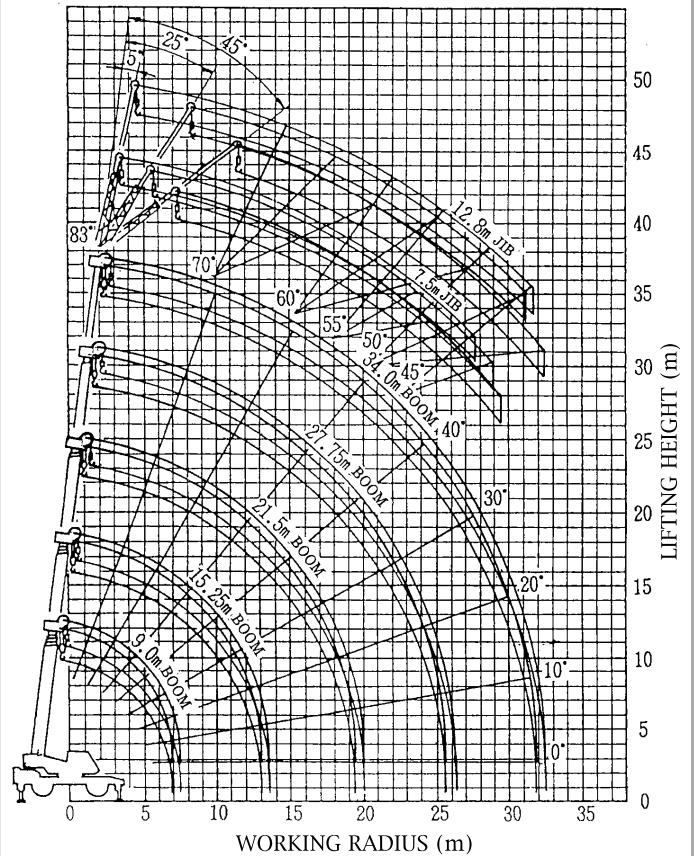
With outriggers set (360°)

Unit: ton

		Outriggers fully extended												
A	B (m)	9.0m	15.25m	21.5m	27.75m	34.0m	C		7.5m			12.8m		
							D	E (°)	5°	25°	45°	5°	25°	45°
3.0	35.0		22.5					83	3.0	1.8	1.3	2.0	1.05	0.7
3.5	30.0		22.5	15.5				78	3.0	1.8	1.3	2.0	1.05	0.7
4.0	26.2		21.5	15.5	10.0			75	2.55	1.8	1.3	1.65	1.05	0.7
4.5	23.3		20.0	15.5	10.0			72	2.2	1.65	1.3	1.4	0.95	0.7
5.0	21.0		18.6	14.4	10.0	6.5		70	2.0	1.55	1.3	1.25	0.9	0.7
5.5	19.0		17.5	13.5	10.0	6.5		65	1.65	1.3	1.15	1.0	0.75	0.65
6.0	17.5		16.4	12.7	10.0	6.5		60	1.35	1.1	1.0	0.85	0.65	0.6
6.5	16.0		15.5	12.0	9.4	6.5		55	1.15	0.95	0.9	0.7	0.55	0.55
7.0			14.6	11.3	8.9	6.5		50	0.9	0.8	0.75	0.6	0.5	0.5
8.0			12.3	10.1	8.0	6.4		45	0.55	0.5	0.45	0.4		
9.0			10.0	9.0	7.3	5.8								
10.0			8.2	8.0	6.7	5.3								
11.0			6.75	6.7	6.2	4.8								
12.0			5.7	5.7	5.7	4.4								
13.0			4.85	4.85	5.2	4.1								
14.0				4.15	4.6	3.8								
15.0				3.55	4.05	3.5								
16.0				3.05	3.6	3.3								
17.0				2.6	3.2	3.1								
18.0				2.2	2.8	2.9								
19.0				1.9	2.45	2.65								
20.0					2.15	2.4								
22.0					1.65	2.0								
24.0					1.25	1.6								
26.0						1.25								
28.0						0.95								
30.0						0.7								
31.5						0.5								

- A = Boom length
- B = Working radius
- C = Jib length
- D = Jib offset
- E = Boom angle

### WORKING RADIUS-LIFTING HEIGHT



### DIMENSIONS

